

ProActa 6 T

Above Timber Sub-Floor Acoustic System

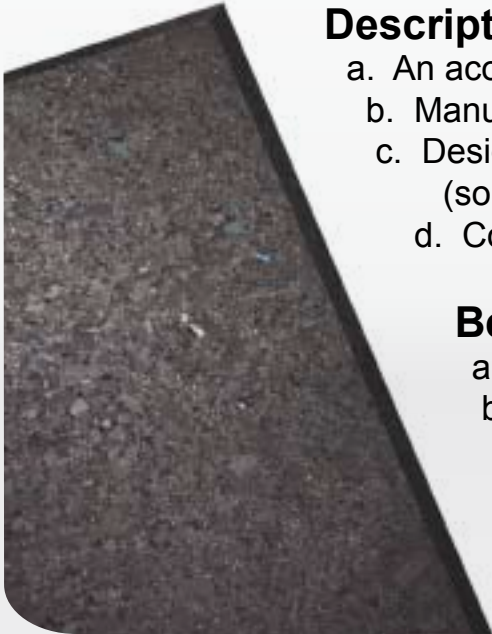
Technical Information

Description

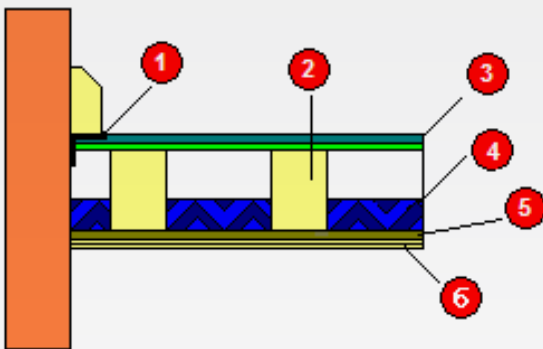
- a. An acoustic matting for use on top of a timber sub-floor application
- b. Manufactured from 100% recycled materials
- c. Designed to help reduce impact noise from source (some airborne properties)
- d. Cost effective, supplied in rolls for easy installation

Benefits

- a. Independently tested by a UKAS accredited laboratory
- b. Suitable for all, underscreed applications (PCT)
- c. Accepted for NHBC for ADE 2003 compliance
- d. Extremely comfortable underfoot
- e. Long-term performance without “collapse or bottoming”



Standard “Timber” Floor Build



1. Acoustic Flanking Band
2. Timber Joists
3. ProActa 6 T (on top of existing floorboards / deck)
4. 100mm Acoustic Partition Roll
5. Resilient Bar Section
6. 12mm Soundblock / Fireboard (inc 19mm plasterboard)

NB: Carpets can be laid directly on top of ProActa 6 T, any “hard” final floor finishes will need a wooden deck fitted.

Acoustic Performance

Impact Sound Insulation (Timber Sub-Floor)

Material	Floor Build	Regulations	Achieved
ProActa 6 T (6mm)	Final Floor Finish ProActa 6 T Existing Floorboards Timber Joists 100mm Partition Roll Resilient Bar Section 12mm Fire/Sound Board 19mm Plasterboard	In accordance with BS EN ISO 140-8:1998 (17db improvement required)	23dB

Physical Information

- a. Overall Length 12.5m
- b. Overall Width 1m
- c. Overall Thickness 6mm



PROACTIVE
ACOUSTIC
S U P P L I E S

Unit A2, Lecturers Close, Bolton, Lancashire, BL3 6DG

Tel: +44 (0)845 241 2560 Fax: +44 (0)845 241 2561

WWW.ACOUSTICS-UK.COM

Proactive Acoustic Supplies is a trading style of Tailored Roofing Systems Ltd